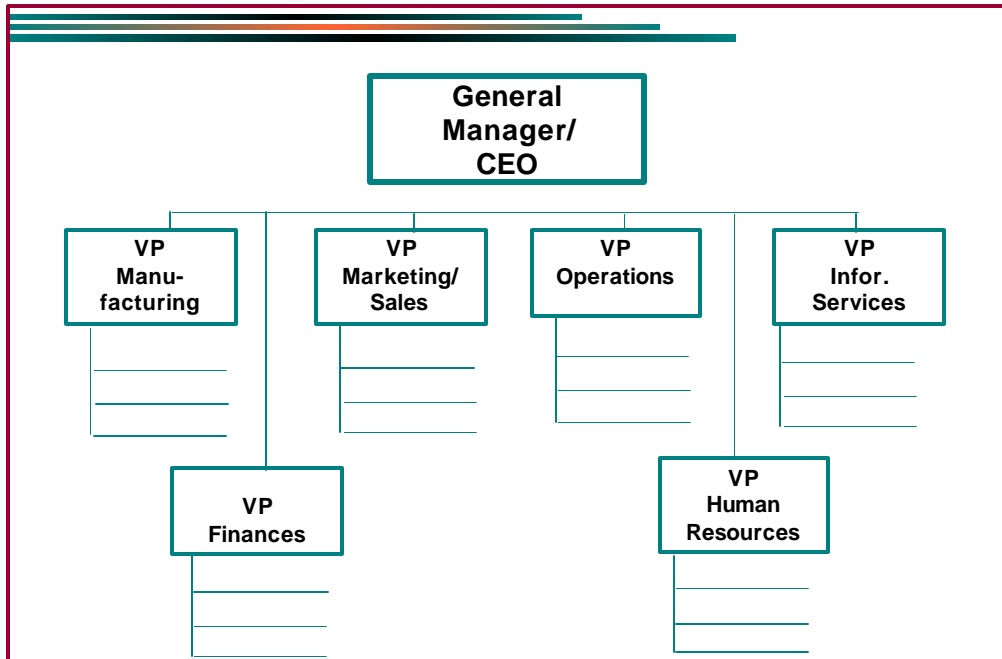


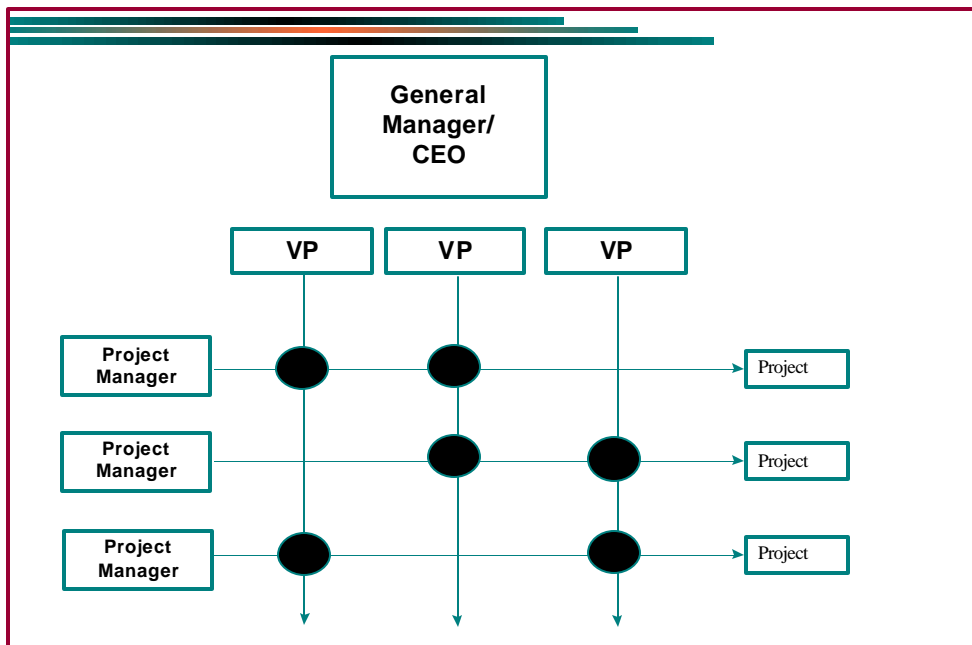
What's wrong with a regular old Organization Chart?

1. Traditional Hierarchical Charts often don't tell the project story
2. Project membership can be is fluid
3. People may not want to commit to paper
4. Power/authority relationships ought to be made explicit



Functional Organizations

1. People have jobs if there are no projects
2. Usually more operational environments
3. May have difficult time accommodating project work



Matrix Organization

1. If there are no projects, people don't have jobs
2. Usually construction or consulting environments
3. May have difficulty incorporating operational needs

Strong-Matrix and Weak Matrix

1. Blends of the two organizational extremes
2. In a weak matrix, team members have greater allegiance to functional manager
3. In strong matrix, team members have greater allegiance to project manager

